



Introducing this beautifully finished brand new two bedroom end of terrace house, ideally located in St Marys Platt. Perfect for modern living, the property offers a stylish and contemporary layout throughout. Peaceful end-of-terrace in a newly developed cul-de-sac. Early viewing is highly recommended. Deposit £2,071

## 1 Darby Close

Platt, Sevenoaks, TN15 8GB

 2

 1

 1

 C

£1,695 Per Month

### Property Description

This beautifully presented brand new end-of-terrace home offers bright, spacious living throughout and is finished to a high standard. The property features two generously sized double bedrooms, a light-filled open-plan living area, and a modern fitted kitchen complete with fully integrated appliances.

The stylish bathroom includes both a walk-in shower and a separate bath, providing both comfort and practicality. Outside, you'll find a low-maintenance rear garden perfect for relaxing or entertaining.

Additional benefits include two private parking spaces and an EV car charging point, all situated in a quiet, newly developed cul-de-sac—an ideal setting for modern living.

### Location

Darby Close is ideally situated just off Maidstone Road in the sought-after village of Borough Green, within the district of Sevenoaks. This well-connected and family-friendly area offers a wonderful balance of village charm and modern convenience.

Local Amenities benefits from a variety of local shops, cafés, restaurants, and essential services including a Co-op supermarket, chemist, post office, and medical centre. The village also has several highly regarded primary

schools, as well as easy access to nearby secondary schools in Wrotham and Sevenoaks.

Borough Green & Wrotham Station is just a short walk away, offering direct rail services to London Victoria, London Blackfriars, and Maidstone, making it an excellent option for commuters.

The property is conveniently located for access to major road networks. A25 runs directly through Borough Green. M20, M26, and M25 motorways are all within easy reach, providing excellent connectivity to London, Maidstone, Sevenoaks, and beyond.

### Viewing Arrangements

Please contact Kings to arrange a viewing – strictly by appointment.

### Directions

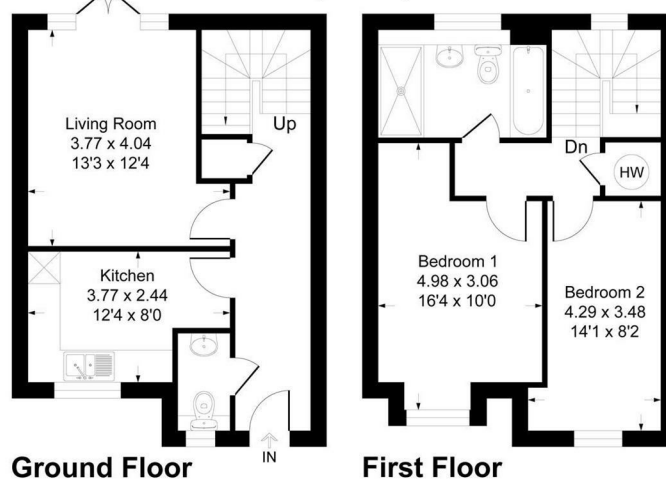
As you approach Borough Green, Darby Close will be located just off Maidstone Road. Darby Close is a small, newly developed cul-de-sac. No. 1 is the first property at the entrance. What3words location finder: ///backed.brass.tracks

### Property Information

Electric, Water and Drainage. EPC Rating C

### The Old Dairy, Maidstone Road, TN15

Approximate Gross Internal Area  
74.5 sq m / 802 sq ft



This plan is for layout guidance only. Not drawn to scale unless stated. Windows and door openings are approximate. Whilst every care is taken in the preparation of this plan, please check all dimensions, shapes and compass bearings before making any decisions reliant upon them.  
Produced By Planpix

[www.kings-estate-agents.co.uk](http://www.kings-estate-agents.co.uk)

These particulars, whilst believed to be accurate are set out as a general outline only for guidance and do not constitute any part of an offer or contract. Intending purchasers should not rely on them as statements of representation of fact, but must satisfy themselves by inspection or otherwise as to their accuracy. No person in the firm's employment has the authority to make or give any representation or warranty in respect of the property.

51 Western Road, Borough Green, Kent, TN15 8AN  
T: 01732 885585

[bglittings@kings-estate-agents.co.uk](mailto:bglittings@kings-estate-agents.co.uk)

[kings-estate-agents.co.uk](http://kings-estate-agents.co.uk)

